



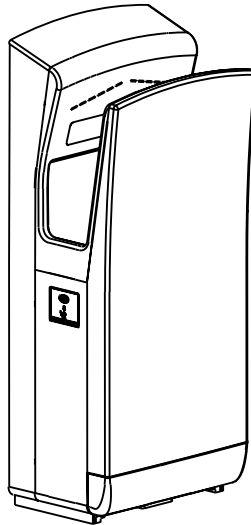
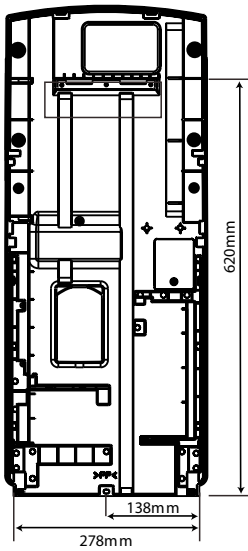
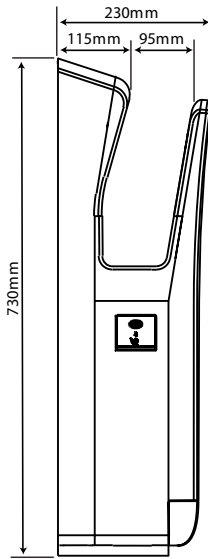
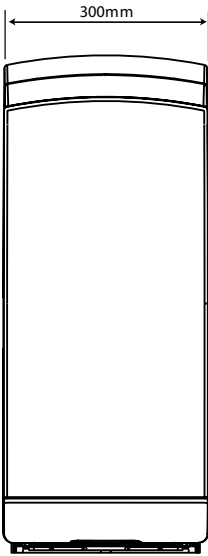
Automatic Hand Dryers

**Blade Hand Dryer**  
Instructions Manual

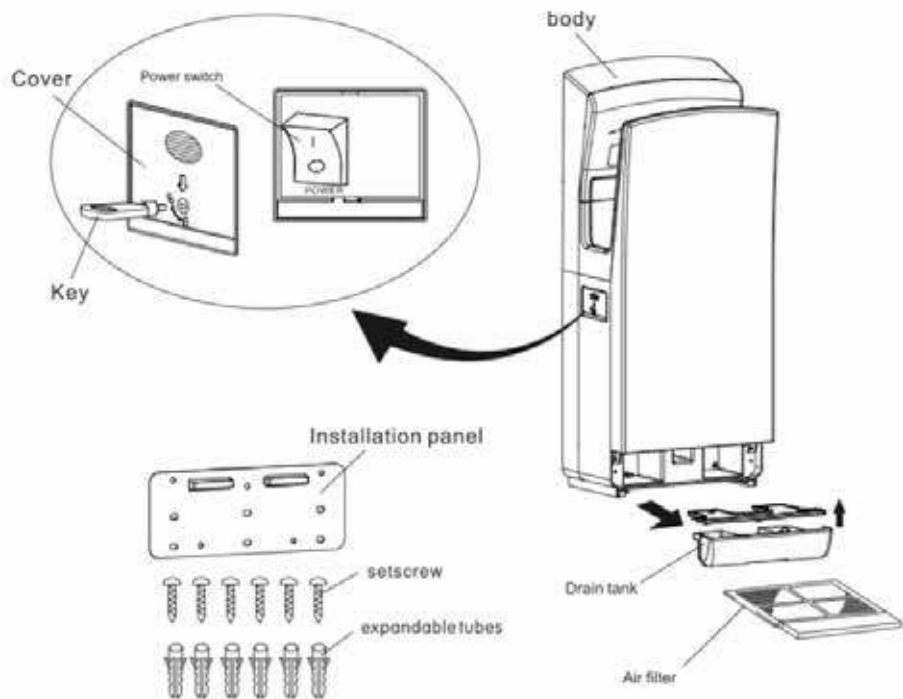
# Table of Contents

Product Dimensions	3
Names of the Various Components	4
Product Features, Technical Specifications & Package Contents	5
Installation Instructions	6
Installation & Safety Guidelines	8
Operation Guidelines	9
Cleaning & Maintenance Guidelines	10
Warranty Details	11

# Product Dimensions



# Names of the Various Components



# Product Features, Technical Specifications & Package Contents

## Product Features:

- The contemporary, ergonomic style gives the Blade its streamlined look
- A heavy-duty Stainless Steel casing offers excellent protection from corrosion and vandalism
- The automatic 'no touch' operation makes this a hygienic system
- Air is exerted from its double injection air-flow system which removes moisture from both sides of your hands – drying time is just eight seconds
- Auto cut-off eliminates energy wastage
- Minimal power consumption, maximum output – the Blade reduces your carbon footprint
- Reduced noise levels make this a discrete dryer
- Its unique high-brightness blue LED light indicator helps users position their hands directly in the warm air stream for maximum efficiency
- Easy to install and with a removable drip trap and air filter, it is effortless to maintain
- Finishes available in Brushed Metal, Polished Chrome and Arctic White

## Technical Specifications:

- Shell material/s: ABS Plastic and 304 Stainless Steel
- Standard finishes: Brushed Metal, Silver, White
- Rated voltage: AC 220-240V
- Rated frequency: 50 / 60 Hz
- Rated power: 1,650W
- Installation: wall mounted
- Drying time: 8 seconds
- Air speed: 95 M/s
- Noise output: 68dB
- Operation: infrared automatic 'no touch'
- Timing protection: 60 seconds auto cut off
- Thermal protection: cut off above 70C

- Waterproof rating: IPX4
- Unit dimensions: 300mm W x 730mm H x 230mm D
- Net weight: 12.0 kg
- Warranty: 2 Years
- Certification: CE, RoHS

## Package Contents:

- Hand dryer
- Wall mounting bracket
- Fixtures and fittings
- User manual and installation guide

# Installation Instructions

## **Drill the fixing points:**

- Offer the installation panel up to the mounting surface and mark the five fixing points through the holes in the backplate. Drill the five marked fixing holes and insert the supplied wall plugs. Offer the installation panel up to the wall, and insert the five fixing screws through the panel into the wall plugs.
- Drill a further fixing hole 615mm down from the top centre of the installation panel and insert the supplied wall plug.

## **Wire the unit:**

- Remove the terminal cover mounting screw and remove the cover itself.
- Wire the unit accordingly.
- Replace the terminal cover once complete.

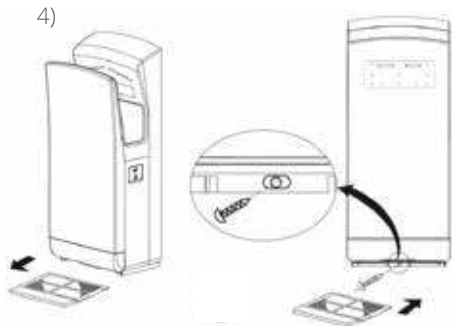
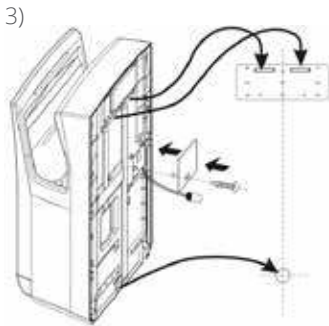
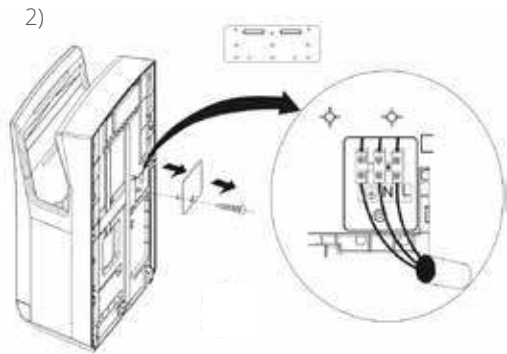
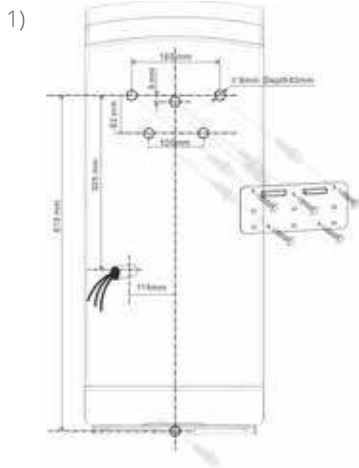
## **Fix the unit in place:**

- Firstly, remove the drain tank and air filter.
- Engage the panel hooks of the installation panel on the back of the unit.
- Check that the power cable is not trapped behind the unit.
- Gently press the unit onto the wall, and then fix it in place using the mounting screw at the bottom.
- Replace the drain tank and air filter.

## **Recommended Mounting Heights**

Measurements are from the bottom of the installation panel to the floor

- Mens / Ladies: 850mm
- Disabled: 730mm



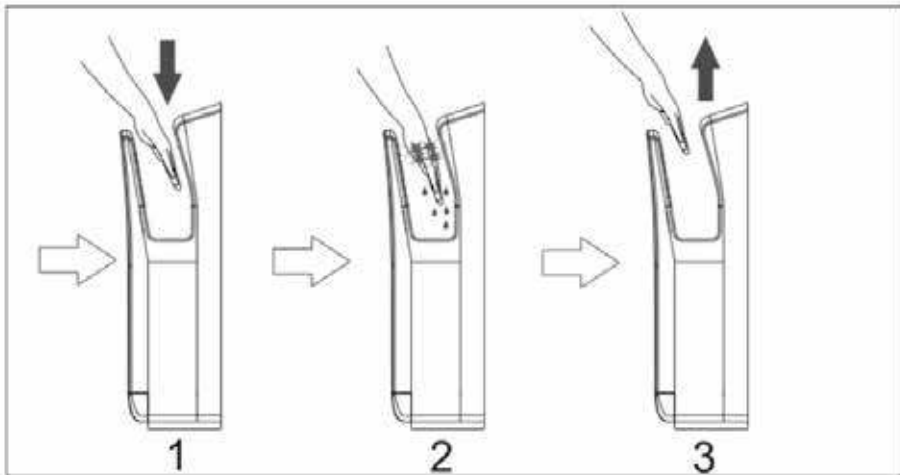
# Installation & Safety Guidelines

- All electrical installation and repair work should be carried out by a qualified electrician in accordance with current local codes or regulations.
- Do not attempt any disassembly or modification of the unit that is not expressly stated in this manual.
- Do not install when the product (power cable) is electrified.
- Install securely in a location strong enough to support the weight of the unit.
- Install the hand dryer on a smooth surface and in an area where people are not likely to collide with the object once installed.
- Do not scratch, damage, process, excessively bend, pull, twist or bundle the power cable, and do not place heavy objects onto it or trap it.
- Do not use in a hot location such as a shower room, where condensation may form on the unit, or where water may splash directly at the unit.
- Do not install this hand dryer above sources of water such as sinks or taps.
- Do not install in locations where salt damage may occur, or where corrosive, neutral, or reductive gases are present.



# Operation Guidelines

1. Before inserting hands under the dryer, shake off any excess water.
2. This hand dryer incorporates no touch sensor activation for hygienic use. Simply place your hands within the air outlet compartment and the hand dryer will be automatically activated.
3. Remove your hands away from the air outlet and the hand dryer will be deactivated after 2 seconds.
4. The hand dryer will automatically cut off after running for 60 seconds if the sensor is activated for this period. If need be, remove hands from the sensor and return your hands and the dryer will re-activate.



# Cleaning & Maintenance Guidelines

Cleaning and maintenance should be carried out by service personnel only, after ensuring that the unit is disconnected from the power supply. It is recommended that cleaning be carried out regularly every week.

## A) Cleaning the unit body

1. Simply wipe down the exterior of the dryer with a damp cloth, removing any build up dirt, paying particular attention to the sensor.

## B) Draining and cleaning the drain tank

1. Remove the drain tank component.
2. Open the cover of the drain tank and empty the water. Wash out the interior of the drain tank.
3. Close the cover of the drain tank, and replace the drain tank back within the body.
4. To ensure that the drain hole (within the air outlet compartment) is not blocked, you can pour a small cup of water through the drain hole and ensure that it arrives in the drain tank.

## C) Cleaning the air filter

1. Remove the air filter component
2. For a light clean – use a vacuum cleaner to remove any build of dirt. For a more thorough clean – soak the air filter in warm water.
3. Replace the air filter back within the body.



# Warranty Details

- All Tekflo Hand Dryers are guaranteed to be free from defects in parts and manufacture for 2 years from the date of purchase, provided that the product is used under the normal operating conditions stated within the manual.
- The warranty is only available to the original purchaser and is not transferable. Your consumer rights are not affected.
- If there are any defects with your hand dryer please contact the provider stating your invoice number, date of purchase, full name and address.
- Do not attempt to repair or take apart the hand dryer your self. If the hand dryer has been tampered with before it arrives with us, the warranty will be void.
- We advise that all customers retain original packaging should the unit need to be returned.
- If your hand dryer occurs a problem outside of the warranty period, we offer a repair service where we can collect and professionally repair your hand dryer.



Automatic Hand Dryers

Visit [www.tekflo.com](http://www.tekflo.com) or email [enquiries@tekflo.com](mailto:enquiries@tekflo.com)  
for more information