

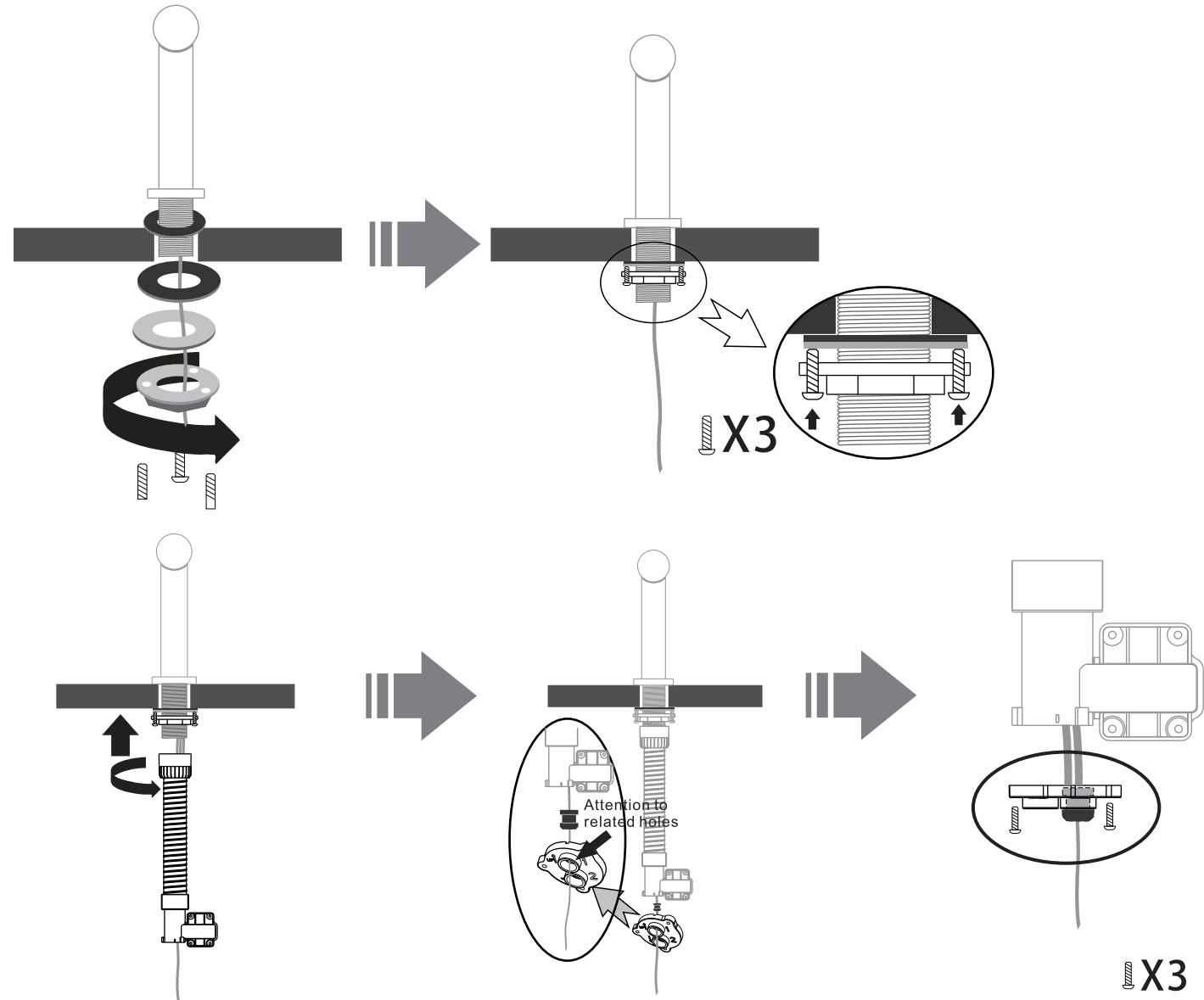
Installation Instructions Fusion Hand Dryer

Fit the dryer head:

- Fit dryer head through surface to be mounted on, ensuring washers, spacers and fixings are all placed in order.
- Fit the three screws through the fixing collar.

Fit the air hose:

- Screw the air hose into place on the underside of the dryer head.
- Fit bracket to end of air hose ensuring the rubber grommet is used.



Installation Instructions Fusion Hand Dryer

Mount dryer body to wall:

- Remove cover of dryer body and fix rear plate to wall using supplied wall plugs and screws.
- Hook dryer body onto back plate.

Wire the unit:

- Remove the cover for the wiring and connect the air hose using supplied fixings.
- Connect the ribbon cable connector to the SW2 terminal shown.

Fix the unit in place:

- Connect to the mains and wait 60 seconds to reset the sensor distance.
- Fit the dryer body cover and fix in place with supplied fixings.

Recommended Mounting Info

- Minimum sink dimensions: 350mm x 300mm x 100mm. Or 350mm Diameter.
- Minimum 600mm distance from next Fusion hand dryer.
- Minimum 80mm distance between wall and dryer.

