



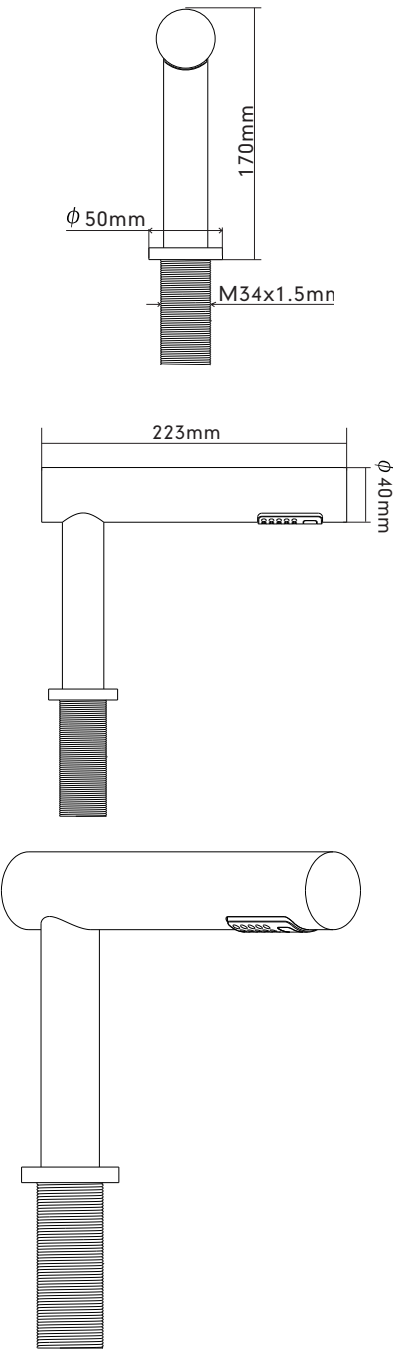
Automatic Hand Dryers

**Fusion Hand Dryer**  
Instructions Manual

# Table of Contents

Product Dimensions	3
Product Features, Technical Specifications & Package Contents	4
Installation & Safety Guidelines	5
Installation Instructions	6
Operation Guidelines	8
Cleaning & Maintenance Guidelines	9
Warranty Details	10
Notes	11

# Product Dimensions



# Product Features, Technical Specifications & Package Contents

## Product Features:

- Its contemporary, sleek, ergonomic design makes this an exceptionally stylish dryer.
- Heavy duty Solid Brass casing gives excellent ongoing protection against corrosion and vandalism.
- The automatic 'no touch' operation ensures impeccable hygiene.
- Over basin drying helps reduce clean up, spills and spillage on floors.
- Maximum output comes at minimal power consumption at only 500W to help reduce carbon footprint.
- Built in removable HEPA filter for hygienic operation with filtered air.
- No unnecessary energy wastage thanks to the automatic cut-off.
- Reduced noise levels make this one of the quietest and most discrete dryers in any class.
- Stylish LED indicator clearly indicates dryer is in use.
- Easy to install and maintain.
- Finish available in Chrome.

## Technical Specifications:

- Shell material: Hpb59-1 Solid Brass
- Standard finishes: Chrome
- Rated voltage: AC 220-240V
- Rated frequency: 50 / 60 Hz
- Rated power: 500W
- Installation: Basin mounted
- Drying time: 15 seconds
- Air speed: 90 M/s
- Noise output: 75dB
- Operation: infrared automatic 'no touch'
- Timing protection: 30 seconds auto cut off
- Thermal protection: cut off above 70C
- Drip Proof: IP24
- Filter: HEPA filter
- Unit dimensions: 50 W x 170 H x 223 D mm
- Net weight: 4.4 kg

- Warranty: 2 Years
- Certification: CE, RoHs

## Package Contents:

- Hand dryer
- Fixtures and fittings
- User manual and installation guide

# Installation & Safety Guidelines

- All electrical installation and repair work should be carried out by a qualified electrician in accordance with current local codes or regulations.
- Do not attempt any disassembly or modification of the unit that is not expressly stated in this manual.
- Do not install when the product (power cable) is electrified.
- Install securely in a location strong enough to support the weight of the unit.
- Install the hand dryer on a smooth surface and in an area where people are not likely to collide with the object once installed.
- Do not scratch, damage, process, excessively bend, pull, twist or bundle the power cable, and do not place heavy objects onto it or trap it.
- Do not use in a hot location such as a shower room, where condensation may form on the unit, or where water may splash directly at the unit.
- Do not install this hand dryer above sources of water such as sinks or taps.
- Do not install in locations where salt damage may occur, or where corrosive, neutral, or reductive gases are present.

# Installation Instructions

## 1) Fit the dryer head:

- Fit dryer head through surface to be mounted on, ensuring washers, spacers and fixings are all placed in order.
- Fit the three screws through the fixing collar.

## 2) Fit the air hose:

- Screw the air hose into place on the underside of the dryer head.
- Fit bracket to end of air hose ensuring the rubber grommet is used.

## 3) Mount dryer body to wall:

- Remove cover of dryer body and fix rear plate to wall using supplied wall plugs and screws.
- Hook dryer body onto back plate.

## 4) Wire the unit:

- Remove the cover for the wiring and connect the air hose using supplied fixings.
- Connect the ribbon cable connector to the SW2 terminal shown.

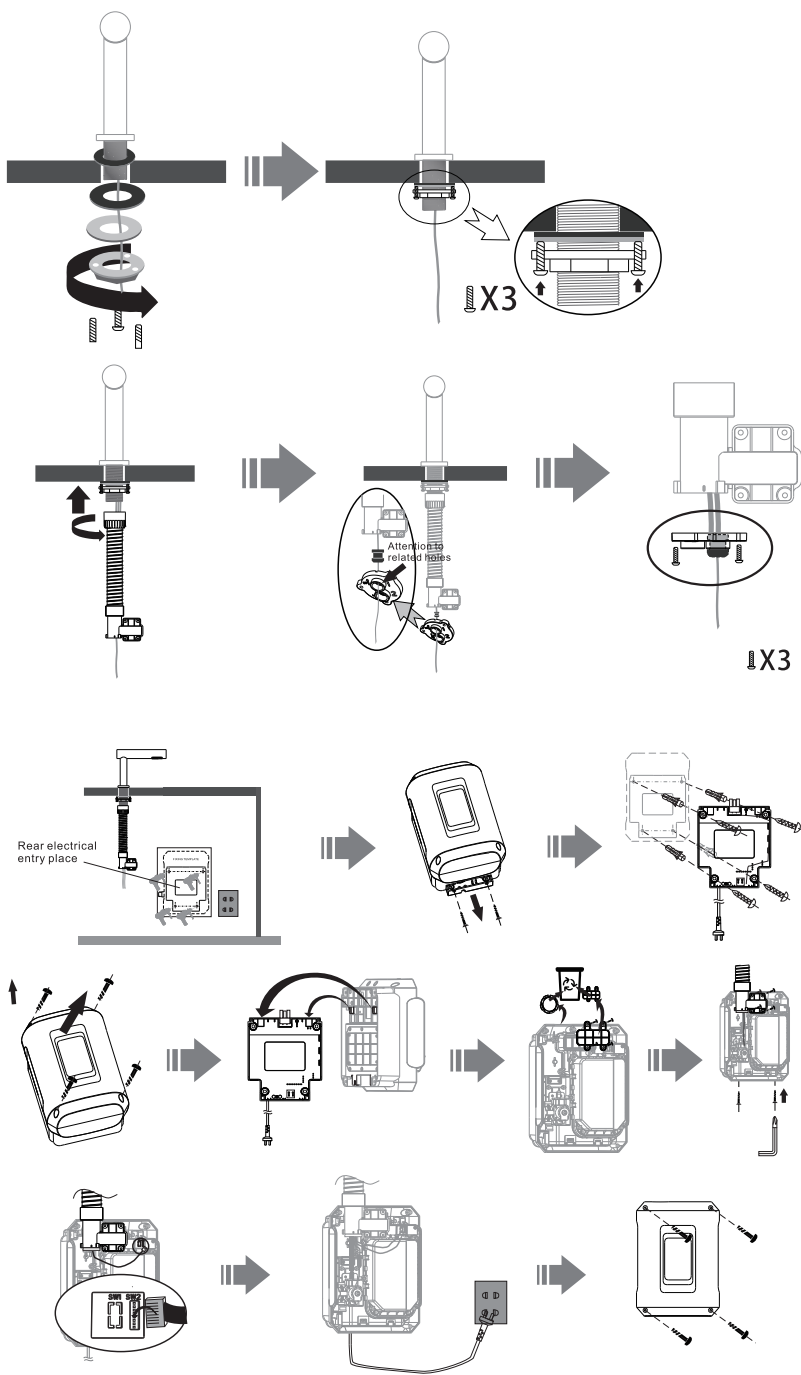
## 5 ) Fix the unit in place:

- Connect to the mains and wait 60 seconds to reset the sensor distance.
- Fit the dryer body cover and fix in place with supplied fixings.

## Recommended Mounting Info:

- Minimum sink dimensions: 350mm x 300mm x 100mm. Or 350mm diameter.
- Minimum 600mm distance from next Fusion hand dryer.
- Minimum 80mm distance between wall and dryer.

# Installation Instructions



# Operation Guidelines

1. Before inserting hands under the dryer, shake off any excess water.
2. This hand dryer incorporates no touch sensor activation for hygienic use. Simply place your hands within the air outlet compartment and the hand dryer will be automatically activated.
3. Remove your hands away from the air outlet and the hand dryer will be deactivated after 2 seconds.
4. The hand dryer will automatically cut off after running for 30 seconds if the sensor is activated for this period. If need be, remove hands from the sensor and return your hands and the dryer will re-activate.

# Cleaning & Maintenance Guidelines

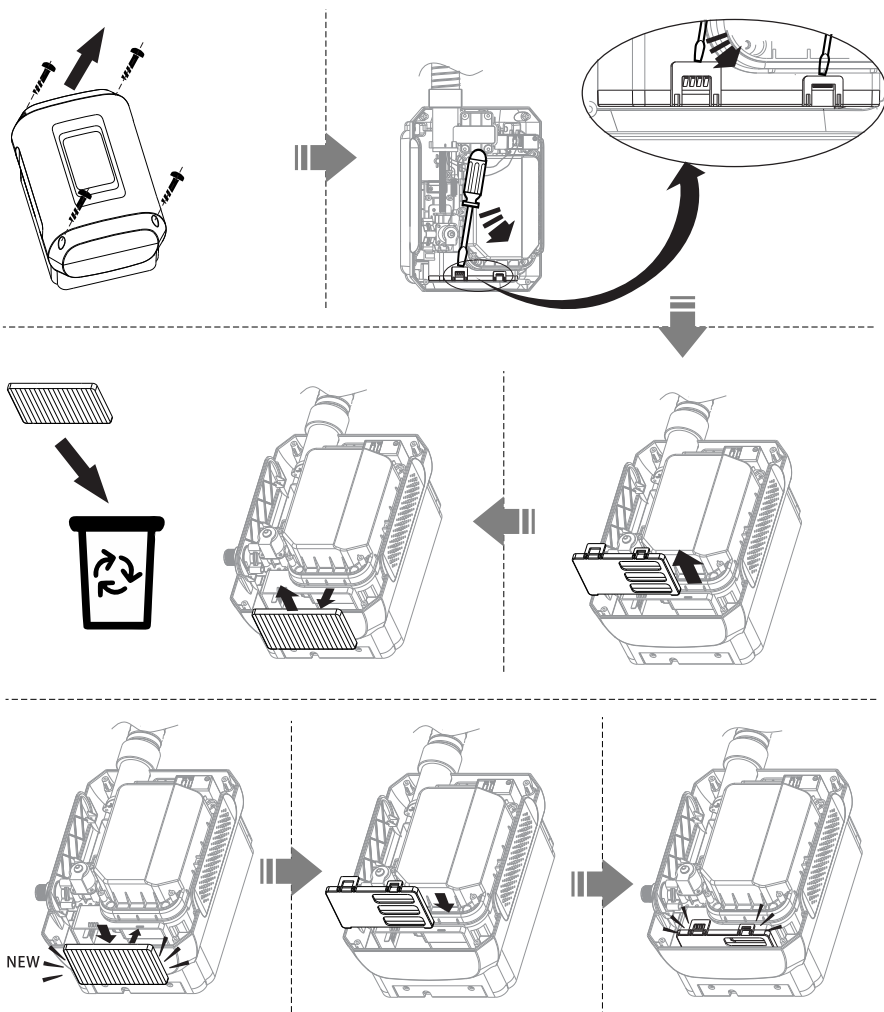
Cleaning and maintenance should be carried out by service personnel only, after ensuring that the unit is disconnected from the power supply. It is recommended that cleaning be carried out regularly every week.

## A) Cleaning the unit body

1. Simply wipe down the exterior of the dryer with a damp cloth, removing any build up of dirt, paying particular attention to the sensor.

## B) Cleaning the air filter

1. Remove the casing from the dryer unit.
2. Replace the air filter every six months.



## Warranty Details

- All Tekflo Hand Dryers are guaranteed to be free from defects in parts and manufacture for 2 years from the date of purchase, provided that the product is used under the normal operating conditions stated within the manual.
- The warranty is only available to the original purchaser and is not transferable. Your consumer rights are not affected.
- If there are any defects with your hand dryer please contact the provider stating your invoice number, date of purchase, full name and address.
- Do not attempt to repair or take apart the hand dryer your self. If the hand dryer has been tampered with before it arrives with us, the warranty will be void.
- We advise that all customers retain original packaging should the unit need to be returned.
- If your hand dryer occurs a problem outside of the warranty period, we offer a repair service where we can collect and professionally repair your hand dryer.





Automatic Hand Dryers

Visit [www.tekflo.com](http://www.tekflo.com) or email [enquiries@tekflo.com](mailto:enquiries@tekflo.com)  
for more information